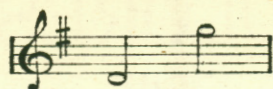


NEW EDITION

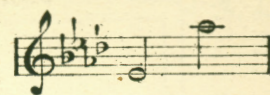
NO 1 IN D MINOR



NO 2 IN E MINOR



NO 3 IN F MINOR



THE GREEN HILLS OF IRELAND

SONG

WORDS BY

MAUD SHIELDS

MUSIC BY

TERESA DEL RIEGO.

PRICE 2/- NET.

CHAPPELL & CO LTD.

50, NEW BOND STREET, LONDON, W. 1.

NEW YORK SYDNEY

New Edition. Copyright, MCMIX, by Chappell & Co Ltd.

5626.

Teresa Del Riego

DOLORES.

Song.

Words by
DENA TEMPEST.

Music by
TERESA DEL RIEGO.

Andante con moto
mf a tempo

Set your wild hair loose, Do - lo - res,

mf a tempo

lingeringly *riten.*

Flood-ing brow and cheek, - Do - lo - res; Hide a-while the witch-ing grace, -
ben legato

riten.

a tempo

All the won - der of your face, Do - lo - res. *etc.*

a tempo

Detailed description: The musical score is written for voice and piano. It consists of three systems. The first system is in C major, 4/4 time, with a tempo marking of 'Andante con moto' and dynamics of 'mf a tempo'. The second system introduces a key signature change to one sharp (F#) and includes performance directions like 'lingeringly', 'riten.', and 'ben legato'. The third system changes the key signature to two flats (Bb) and returns to 'a tempo'. The score includes vocal lines with lyrics and piano accompaniment with various musical notations such as slurs, ties, and dynamic markings.

Copyright, MCMXXIII, by Chappell & Co Ltd.

Published in C (compass C to E) & E \flat .

Price 2/- net.

Chappell & Co, Ltd., 50, New Bond Street, London, W. 1.

NEW YORK.

*

SYDNEY.

And may be had of all Music Sellers.

THE GREEN HILLS OF IRELAND.

Words by
MAUD SHIELDS.

Song.

Music by
TERESA DEL RIEGO.

Andante moderato.

VOICE.

PIANO.

mf

O the

mf molto espressivo

p riten.

con Ad.

Ad.

*

ben sostenuto ed molto espressivo

green hills of Ir - e - land, They are in my mind to - day, Tho' I'm

mp sempre legato

sit - tin' at my cab - in door a ma - ny mile a - way, — An' its

p

years since last I saw them, An' came West-ward oer the

cres:

poco cres:

sea, But the green, green hills of Ir - e - land, They are

ten. mp

ten.

ten.

poco rit.

ve - ry dear to me. O the green hills of

mf

Più vivo e più mosso.

p cantabile col canto

mf

Ir - e - land that I played on whin a boy, With a

cres: heart as light as feather, *f* So full it was of

cres: *f* *rit:* *col canto*

joy! Tho' my coat was thin an' rag - ged, an' my

a tempo *rit:* *a tempo* *col canto* *ten:*

a tempo feet were brown an' bare, *rit:* Yet it's young a - gain I'd

a tempo *rit:* *f a tempo*

rit - - en like to be, and play - in' o - ver there, *lunga pausa* Oh! The

rit: *col canto* *f* *lento* *ten:*

Andante grandioso e con moto.

ff ben legato

green hills of Ir - e - land, Sure it all comes back to -

ff

rall:

p

poco accel:

cres:

- day; The time I told sweet Mol - ly that my

p

poco accel: marcato

e

cres:

rit - en - u - - - to

ten.

appassionata

heart was hers for aye, Ah! we

rit - en - u - - - to

fz

f a tempo

wan - dered in the mea - dows when the

f a tempo legato

dim:

rit:

rall:

p

sun was sink - in' low, O'er the green, green hills of

rall:

p

Lento.

ten:

p con tenerezza

riten:

Ir - e - land, In the far off long a - go!

Lento.

p cantabile

rit - en - u - pp - to

Chappell & Co.'s New and Popular Songs

HERMANN LÖHR		SUNG BY		EDWARD GERMAN		SUNG BY		GUY D'ARDELOT		SUNG BY	
Compass 1st Key				Compass 1st Key				Compass 1st Key			
D-D	Roadways. D, Eb, F ...	Mr. Robert Radford and Mr. Malcolm McEachern	Waltz Song ("Tom Jones"). G, D ...	A-G	Miss Ruth Vincent	B-E	Because. Ab, Bb, C ...	C-Eb	Never Mind. Eb, F ...	C-Eb	Mr. Eric Marshall
C-F	†Whatever is—is best. F, G, Bb	Miss Margaret Balfour	Four jolly sailormen. C, D ...	G-E	Mr. Robert Radford	B-Eb	The Curtain Falls. Ab, Bb, D	B-Eb	Miss Leila Megane and Mr. Eric Marshall	B-Eb	Miss Ethel Hook
D-D	Ballad of Cape St. Vincent. G, A ...	Mr. Malcolm McEachern	Love is meant to make us glad. D, Eb, F ...	Ab-Eb	Miss Margaret Cooper	B-Eb	Speak to Me. Eb, F, G ...	Bb-Eb	Miss Edna Thornton	D-E	Mr. Eric Marshall
B-D	Alanna. F, G, Bb ...	Mr. Stanley Holloway & Mr. Harold Williams	The Yeomen of England. C, D	C-D	Mr. Kennerley Rumsford	B-Eb	†Sometimes in my dreams. Eb, F, G ...	D-E	Miss Edna Thornton	D-Eb	Miss Edna Thornton
C-D	The Cobbler. F, G, Ab ...	Mr. Stanley Holloway & Mr. Harold Williams	MONTAGUE F. PHILLIPS	C-F	Miss Clara Butterworth	C-Eb	I know a lovely garden. Eb, F, G	C-Eb	Miss Edna Thornton	A-D	Miss Edna Thornton
C-D	So little Time. F, G, A ...	Mr. Stanley Holloway & Mr. Harold Williams	O ship of my delight. Bb, C ...	C-F	Miss Clara Butterworth	B-Eb	Wait. Eb, F, G ...	A-D	Miss Edna Thornton	C-Eb	Miss Edna Thornton
D-D	Throb of the Passionate Day. G, Ab, Bb ...	Mr. Stanley Holloway & Mr. Harold Williams	Butterfly wings. F, Ab ...	B-Eb	Miss Clara Butterworth	C-Eb	I hid my love. Bb, D, Eb ...	C-Eb	Miss Edna Thornton	A-D	Miss Edna Thornton
B-E	John. D, F ...	Miss Maggie Teyte	Among the Willows. Eb, F, G	C-Eb	Miss Dora Labbette	C-Eb	I think. Bb, C, D ...	A-D	Miss Edna Thornton	C-Eb	Miss Edna Thornton
Bb-Eb	Road of Looking-Forward. Eb, F, G ...	Miss Carmen Hill	Daffodils in London Town. Eb, F ...	C-F	Miss Bella Baillie	C-Eb	The dawn. D, Eb, F, G ...	Ab-D	Miss Edna Thornton	C-Eb	Miss Edna Thornton
C-Eb	Where my caravan has rested. Eb, F, G, Ab ...	Mr. Kennerley Rumsford	Sweet Lady Moll. Bb, C, Eb ...	Bb-D	Miss Sarah Fischer	C-Eb	LIZA LEHMANN	C-C	Miss Ruth Vincent and Miss Blanche Tomlin	C-Eb	Miss Ruth Vincent and Miss Blanche Tomlin
A-D	Little grey home in the West. Bb, C, D, Eb ...	Mr. Thorpe Bates	With courtly grace. Eb, F, G	C-E	Miss Amy Evans	C-Eb	Daddy's sweetheart. F, G, Bb	A-D	Miss Louise Dale	C-Eb	Miss Louise Dale
C-C	Eyes that used to gaze in mine. F, A, C ...	Mr. Kennerley Rumsford	Sing merrily to-day. C, D, F	A-Eb	Miss Hubert Eisdell	C-Eb	Good morning, Brother Sunshine. A, C, Eb ...	C-Eb	Miss Louise Dale	C-Eb	Miss Louise Dale
Bb-D	Rose of my heart. Bb, C, D, Eb	Miss Carmen Hill	Nightfall at Sea. Bb, D, Eb ...	C-Eb	Miss Amy Evans and Miss Dora Labbette	D-E	There are fairies at the bottom of our garden. D, Eb ...	C-Eb	Miss Louise Dale	C-Eb	Miss Louise Dale
C-D	Two little Irish songs (Low, Medium, and High).	Miss Carmen Hill	Wind on the Wheat. Cmi, E, mi.	C-G	Miss Clara Butterworth	D-E	Thoughts have wings. D, Eb, F	B-E	Miss Louise Dale	B-E	Miss Louise Dale
E-D	HAYDN WOOD	Miss Dora Labbette	Sing, joyous bird. C, D	B-Eb	Mr. Hubert Eisdell and Mr. George Baker	D-E	TERESA DEL RIEGO	D-E	Mme. D'Alvarez	D-E	Mme. D'Alvarez
C-F	A Brown Bird Singing. F, G, Ab	Miss Dora Labbette	Wake up! D, Eb, F ...	B-D	Mr. Malcolm McEachern	C-E	†Homing. Bb, C, D ...	D-E	Miss Louise Dale	D-E	Miss Louise Dale
B-Eb	Someone brought me Daffodils. F, G, Ab ...	Miss Dora Labbette	Dolorosa. F, Ab ...	D-Eb	Miss Amy Evans and Miss Dora Labbette	C-E	The Night has a thousand eyes. F, Ab ...	A-D	Miss Louise Dale	A-D	Miss Louise Dale
B-E	Song of Quietness. Bb, C, D ...	Miss Dorothy Court	The enchanted forest. C, D ...	C-F	Miss Clara Butterworth	C-E	Rose-Marie of Normandy. D, F, G ...	Bb-E	Miss Louise Dale	Bb-E	Miss Louise Dale
C-Eb	The Fairy Sea. D, Eb, F ...	Miss Dorothy Court	ERIC COATES	D-Eb	Miss Clara Butterworth	C-E	A Jewelled Rosary. Bb, C ...	C-E	Miss Louise Dale	C-E	Miss Louise Dale
B-E	The Haven of Rest called Home. Eb, F ...	Miss Dorothy Court	I pitch my lonely caravan. D, Eb, F ...	B-Eb	Miss Clara Butterworth	C-E	Dolorosa. C, Eb ...	B-Eb	Miss Louise Dale	B-Eb	Miss Louise Dale
B-D	Casey the Fiddler. C, D, E ...	Mr. Malcolm McEachern	Mendin' Roadways. Bb, C ...	D-Eb	Miss Clara Butterworth	C-E	Deeper my love. Eb, F, G ...	A-F	Miss Louise Dale	A-F	Miss Louise Dale
B-Eb	O Flower Divine. Eb, F, Ab	Mr. Hubert Eisdell	Song of the Wild. G ...	D-Eb	Miss Clara Butterworth	C-E	Sink, red sun. D, F ...	Cg-D	Miss Louise Dale	Cg-D	Miss Louise Dale
D-Eb	Roses of Picardy. Bb, C, D ...	Mr. Hubert Eisdell	June's first Rose. C, Eb ...	D-Eb	Miss Clara Butterworth	C-E	Slave song. D, E, F, G mi ...	D-F	Miss Louise Dale	D-F	Miss Louise Dale
C-E	It is only a tiny garden. C, D, Eb	Miss Carmen Hill	Thinkin' of You. Eb, F ...	D-Eb	Miss Clara Butterworth	C-F	Happy song. D, Eb, F ...	B-D	Miss Louise Dale	B-D	Miss Louise Dale
C-D	Love's garden of roses. F, G, Ab, Bb ...	Mr. Ben Davies	Oh Dear. F, G ...	C-F	Miss Clara Butterworth	C-F	†O dry those tears. E, F, G, A ...	A-D	Miss Louise Dale	A-D	Miss Louise Dale
C-D	R. CONINGSBY CLARKE	Mr. Ben Davies	Our little home. F, G ...	B-Eb	Mr. Gervase Elwes	D-Eb	Thank God for a garden. F, Ab, Bb ...	C-F	Miss Louise Dale	C-F	Miss Louise Dale
C-D	The Net-mender. C, Eb, F ...	Mr. Hubert Eisdell	GRAHAM PEEL	C-Eb	Mr. John Coates	C-E	MOLLY GAREW	C-E	Miss Louise Dale	C-E	Miss Louise Dale
D-E	Colinette. D, F ...	Mr. William Boland	In summertime on Bredon. Eb, F	B-Eb	Miss Leila Megane	C-E	Spring comes laughing. Ab, C	C-F	Miss Louise Dale	C-F	Miss Louise Dale
D-F	Night's snare with Love. A, C, D	Miss Bessie Kerr	A Conundrum. Eb, A ...	A-E	Miss Agnes Nicholls	C-E	The Market. F, G ...	C-E	Miss Louise Dale	C-E	Miss Louise Dale
D-Eb	Wondering why. D ...	Miss Carmen Hill	The Setting Sun. Bb, C, Eb ...	B-Eb	Miss Agnes Nicholls	C-E	Tiptoe. C, Eb ...	Eb-F	Miss Louise Dale	Eb-F	Miss Louise Dale
A-E	A bowl of roses. Bb, C, D, E ...	Miss Margaret Balfour	Early morning. Eb, F, G, A ...	A-E	Miss Agnes Nicholls	C-E	The Piper of love. Eb, F ...	C-G	Miss Louise Dale	C-G	Miss Louise Dale
C-E	Spinning. D, F ...	Mr. Topliss Green	Wind of the Western sea. C, D, Eb	D-E	Mr. William Boland	C-E	Love's a Merchant. Eb, F ...	C-E	Miss Louise Dale	C-E	Miss Louise Dale
D-E	Cargoes. C mi ...	Mr. Joseph Hislop	BERNARD ROLT	F-F#	Dame Nellie Melba and Mme. Tatiana	C-E	MAUDE VALÉRIE WHITE	C-E	Miss Louise Dale	C-E	Miss Louise Dale
B-E	You in a Gondola. F, G, Ab, Bb	Miss Carmen Hill	Golden Moon. D, F ...	D-E	Mr. William Boland	C-E	So we'll go no more a-roving. C, D, E ...	C-E	Miss Louise Dale	C-E	Miss Louise Dale
D-F	Golden dancing days. F, G, A	Miss Carmen Hill	Bonjour, Suzon! D ...	F-F#	Dame Nellie Melba and Mme. Tatiana	C-E	Spring has come. C, D, Eb ...	C-F	Miss Louise Dale	C-F	Miss Louise Dale
C-C	Red Devon by the sea. C, Eb, F	Mr. Hubert Eisdell	FRANCO LEONI	A-E	Miss Carmen Hill	C-E	Three little songs: (Low, Medium and High)	A-E	Miss Louise Dale	A-E	Miss Louise Dale
C-D	Blind ploughman. C, D, F ...	Mme. D'Alvarez	The Birth of morn. Eb, F, G ...	B-Eb	Mr. Kennerley Rumsford	C-E	FLORENCE AYLWARD	C-C	Miss Louise Dale	C-C	Miss Louise Dale
D-F	S. LIDDLE	Miss Rosina Buckman	Heart's Haven. Eb, G ...	Bb-D	Miss Margaret Balfour	C-C	†Beloved, it is morn. C, D, F	D-D#	Miss Louise Dale	D-D#	Miss Louise Dale
C-E	Love's Captive. C, Eb ...	Mr. Peter Dawson and Mr. George Baker	Bells of Brittany. Bb, C, D, Eb	A-D	Mr. Charles Tree	D-D#	Shepherdess of Sleep. D, F ...	A-E	Miss Louise Dale	A-E	Miss Louise Dale
C-E	Give a man a horse he can ride. C, E ...	Mr. Peter Dawson and Mr. George Baker	Mistress of the Master. D, Eb	A-D	Mr. Malcolm McEachern	B-Eb	Play the Game! A ...	B-D	Miss Louise Dale	B-D	Miss Louise Dale
C-C	FRANK BRIDGE	Mr. Peter Dawson and Mr. George Baker	A Devonshire wedding. C, D	C-Eb	Miss Margaret Norton	B-Eb	††Love's coronation. E, F, G, A	B-C	Miss Louise Dale	B-C	Miss Louise Dale
C-Eb	Easter hymn. C, Eb ...	Mr. Peter Dawson	String of Pearls. Eb, F, G ...	B-Eb	Miss Margaret Norton	C-E	Song of the bow. E, F, G ...	G-D	Miss Louise Dale	G-D	Miss Louise Dale
C-Eb	Isobel. F mi, F# mi, A mi ...	Mr. Peter Dawson	W. H. SQUIRE	B-Eb	Miss Margaret Norton	C-E	Rose in the bud. Bb, C, D, Eb	Bb-Eb	Miss Louise Dale	Bb-Eb	Miss Louise Dale
Bb-D	H. WALFORD DAVIES	Mme. Edna Thornton	Three for Jack. F, G ...	D-D	Mr. Peter Dawson	C-F	Mifanwy. Eb, F, G ...	C-F	Miss Louise Dale	C-F	Miss Louise Dale
D-Eb	Hame. Bb, C, D ...	Mme. Edna Thornton	Lighterman Tom. Eb, F ...	Ab-E	Mr. Charles Tree	C-E	I wonder if love is a dream. F, Ab	B-Eb	Miss Louise Dale	B-Eb	Miss Louise Dale
C-D	ROGER QUILTER	Mr. Joseph Hislop and Mr. Hubert Eisdell	KENNEDY RUSSELL	B-Eb	Mr. Charles Tree	C-E	PERCY E. FLETCHER	Bb-D	Miss Louise Dale	Bb-D	Miss Louise Dale
C-D	Go, lovely Rose. Eb, F, Gb ...	Miss Hilda Blake	At Santa Barbara. G, A, Bb ...	B-Eb	Mr. Charles Tree	C-E	The Great Adventure. Bb ...	G-D	Miss Louise Dale	G-D	Miss Louise Dale
C-D	Morning Song. C, D, E ...	Mr. John Coates and Mr. Tudor Davies	Young Tom o' Devon. Ab, Bb, C	B-Eb	Mr. Charles Tree	C-E	ALMA GOETZ	Bb-Eb	Miss Louise Dale	Bb-Eb	Miss Louise Dale
B-D#	There be none of Beauty's Daughters. Bb, C, Eb ...	Miss Hilda Blake	ANDRÉ MESSAGER	C-Eb	Miss Charles Tree	C-E	Mélanis in the wood. Bb mi, C mi, D mi ...	C-F	Miss Louise Dale	C-F	Miss Louise Dale
C-D	Fairy Lullaby. F, Ab, Bb ...	Miss Hilda Blake	Long ago in Alcala. F, Ab ...	B-Eb	Miss Charles Tree	C-E	ETHEL BARNES	A-C	Miss Louise Dale	A-C	Miss Louise Dale
B-F	GUSTAV HOLST	Mr. Joseph Hislop and Mr. Peter Dawson	FRANK E. TOURS	C-D	Miss Charles Tree	C-E	†Soul of mine. C, D ...	C-E	Miss Louise Dale	C-E	Miss Louise Dale
C-E	Lovely kind and kindly loving. F, G, Ab ...	Mr. Joseph Hislop and Mr. Peter Dawson	Mother o' mine. Bb, D ...	B-Eb	Miss Charles Tree	C-E	LILY STRICKLAND	C-E	Miss Louise Dale	C-E	Miss Louise Dale
C-D	THURLOW LIEURANCE	Dame Nellie Melba and Mme. Kirkby Lunn	LESLIE STUART	C-D	Miss Charles Tree	C-E	Mah Lindy Lou. C, Eb ...	B-E	Miss Louise Dale	B-E	Miss Louise Dale
C-D	*By the waters of Minnetonka. F, G, A ...	Dame Nellie Melba and Mme. Kirkby Lunn	The Bandolero. Ab, Bb ...	C-D	Miss Charles Tree	C-E	A. L. (arranged by)	A-D	Miss Louise Dale	A-D	Miss Louise Dale
C-D	GERALD CARNE	Miss Ethel Hook and Miss Margaret Balfour	ERNEST NEWTON	C-D	Miss Charles Tree	C-E	Lass with the delicate air (Arne) E, F, G ...	A-D	Miss Louise Dale	A-D	Miss Louise Dale
D-E	Spring sang a Song. D, F ...	Miss Margaret Balfour	The Drum-Major. F, G ...	A-D#	Miss Charles Tree	C-E	NORAH BLANEY	C-E	Miss Louise Dale	C-E	Miss Louise Dale
B-D	Sweet Navarre. D, F, G ...	Miss Margaret Balfour	HERBERT H. NELSON	C-D	Miss Charles Tree	C-E	Mister Bear. D, F ...	A-D	Miss Louise Dale	A-D	Miss Louise Dale
C-E	Cowslip Bells. C, Eb ...	Miss Annie Rees	Windmill. B mi, C mi ...	C-D	Miss Charles Tree	C-E	HAROLD AUSTIN	B-E	Miss Louise Dale	B-E	Miss Louise Dale
C-E	EDRIC GUNDELL	Miss Dora Labbette	L. DENZA	C-D	Miss Charles Tree	C-E	Molly o' Donegal. A mi, B mi ...	B-E	Miss Louise Dale	B-E	Miss Louise Dale
D-E	I will make you Brooches. F, Ab	Miss Dora Labbette	A May morning. D, Eb, F, G	C-D	Miss Charles Tree	C-E	Mummy's li'l Feller. C, Eb ...	Cg-E	Miss Louise Dale	Cg-E	Miss Louise Dale
D-E	MALCOLM SARGENT	Mr. John Coates	J. M. CAPEL	C-D	Miss Charles Tree	C-E	Shepherd's Love Song. D, F ...	C-D	Miss Louise Dale	C-D	Miss Louise Dale
C-F	My Heart has a quiet Sadness. G, Bb ...	Miss Dora Labbette	Love, could I only tell thee. C, D, F ...	C-D	Miss Charles Tree	C-E	Wood-Fairies. D, F ...	C-D	Miss Louise Dale	C-D	Miss Louise Dale
C-F	RAYMOND LOUGHBOROUGH	Miss Dora Labbette	JACQUES BLUMENTHAL	C-D	Miss Charles Tree	C-E	Glimpses. C, Eb ...	C-D	Miss Louise Dale	C-D	Miss Louise Dale
Cg-D	Light of our Life. C, Eb ...	Miss Dora Labbette	An evening song. Eb, F, G, Ab	C-D	Miss Charles Tree	C-E	WILLIAM DICMONT	F-D	Miss Louise Dale	F-D	Miss Louise Dale
C-E	GEORGE AITKEN	Miss Dora Labbette	FREDERIC CLAY	B-Eb	Miss Charles Tree	C-E	Ma little Banjo. F, Ab ...	A-E	Miss Louise Dale	A-E	Miss Louise Dale
C-E	Jest her way. Bb, C, D ...	Miss Dora Labbette	I'll sing thee songs of Araby. Eb, F, G, Ab ...	B-Eb	Miss Charles Tree	C-E	HAROLD HAMPSON	Bb-D	Miss Louise Dale	Bb-D	Miss Louise Dale
C-E	Maire, my girl. C, D, E ...	Miss Dora Labbette	F. PAOLO TOSTI	A-Eb	Miss Charles Tree	C-E	Just You. Eb ...	C-E	Miss Louise Dale	C-E	Miss Louise Dale
D-E	PAUL A. RUBENS	Miss Dora Labbette	*Beauty's eyes. C, Eb, E, G ...	D-Eb	Miss Charles Tree	C-E	Sunshine and Shadow. C, D ...	C-D	Miss Louise Dale	C-D	Miss Louise Dale
D-E	I love the moon. C, D, D ...	Miss Dora Labbette	My dreams. Bb, C, D, Eb ...	B-Eb	Miss Charles Tree	C-E	SHERIDAN GORDON	C-D	Miss Louise Dale	C-D	Miss Louise Dale
A-D	F. S. BREVILLE-SMITH	Miss Dora Labbette	Venetian song. Bb, D, Eb, F	B-Eb	Miss Charles Tree	C-E	A fat li'l feller wid his mammy's eyes. C, Eb, G ...	C-C	Miss Louise Dale	C-C	Miss Louise Dale
A-D	Song of the waggoner. C, D ...	Miss Dora Labbette	MONK GOULD	A-Eb	Miss Charles Tree	C-E	FRANK LAMBERT	C-D	Miss Louise Dale	C-D	Miss Louise Dale
			The Curfew. Eb, F ...	C-D	Miss Charles Tree	C-E	Night has a thousand eyes. F, Ab ...	C-C	Miss Louise Dale	C-C	Miss Louise Dale
			NOEL JOHNSON.	C-D	Miss Charles Tree	C-E	†God's garden. F, Ab, Bb ...	C-C	Miss Louise Dale	C-C	Miss Louise Dale
			Gray Days. F, G, Ab ...	C-D	Miss Charles Tree	C-E	She is far from the land. G, Ab	C-Eb	Miss Louise Dale	C-Eb	Miss Louise Dale

The Compass of the first Key only is given. * Violin Accomp. † Violin or 'Cello Accomp. ‡ Organ Accomp.