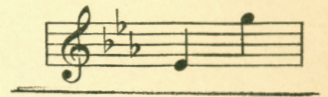


No 1 IN C



No 2 IN E<sup>b</sup>



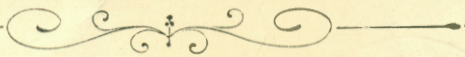
# NO CANDLE WAS THERE AND NO FIRE



SACRED SONG

WORDS BY

FRANCES M. GOSTLING



MUSIC BY

LIZA LEHMANN

PRICE 40 CENTS NET  
EXCEPTING CANADA AND FOREIGN COUNTRIES

FOR THE COUNTRIES OF NORTH AMERICA  
CHAPPELL-HARMS, INC.  
62 W. 45th Street  
NEW YORK, N. Y.

FOR ALL OTHER COUNTRIES  
CHAPPELL & Co., LTD.  
MELBOURNE LONDON SYDNEY

# Junior Choir Album



## Fifteen Two Part Anthems



Suitable for  
SUNDAY SCHOOL AND JUNIOR CHOIRS

Selected, Edited and Composed  
By  
**BERNARD HAMBLEN**

### Contents

#### General

A Benediction  
A Little Prayer  
Bells Over Jordan  
From Day To Day  
Grant Us Thy Peace

His Haven  
O Light Of All The World  
Spirit Divine  
Teach Me O Lord  
The Heavenly Guide

The Sacred Flame

#### Easter

Hail King Eternal  
The Empty Tomb

#### Christmas

O Babe Divine  
O Wondrous Night

PRICE \$1.00 NET

Chappell-Harms, Inc.

62 West 45th Street.

New York

# No Candle Was There And No Fire

Words by  
FRANCES M. GOSTLING

Music by  
LIZA LEHMANN

Andante e semplice ♩ = 126

VOICE

PIANO

*p* = 108 (a little slower than the introduction)

No can - dle was there and no

fire, In the sta - ble where Je - sus was

Copyright MCMIX by Chappell & Co., Ltd.  
Published by Chappell-Harms Inc., New York.

born; In the stall where our Sav - iour was

laid Till the ro - sy - red break - ing of

morn; For the Christ - child and Sav - iour no

*cresc.* *mf*

*cresc.* *colla voce mf*

light, and nev - er a can - dle to

*dim.* *dim.*

burn.

*p dolce*

*cresc.*

But the

moon gave a ra - diance di - vine, And the

*L.H. cresc.*

stars an ef - ful - gence bright; And the

on - ly sound to be heard — Was the

*p*

R. H. *p*

low - ing of kine through the night, — And the

*cresc.*

*cresc.*

sigh - ing of wind in the trees, — and the

*f* *rall.* *pp* *poco rall.*

L. H.

*f* *colla voce*

*Red.* \* *Red.* \*

flap - ping of An - gels' wings. —

*pp* *poco rall.*

L. H.

*Red.* \*

# Sacred Songs

FOR  
LOW, MEDIUM AND HIGH VOICES

*A BENEDICTION . . . . .	BERNARD HAMBLEN . . . . .	. 40
*A CHRISTMAS CRADLE SONG . . . . .	ALEXINE PROKOFF . . . . .	. 40
*A LITTLE PRAYER . . . . .	BERNARD HAMBLEN . . . . .	. 40
AWAKE THOU THAT SLEEPEST . . . . .	WARD-STEPHENS . . . . .	. 40
*BELLS OVER JORDAN . . . . .	BERNARD HAMBLEN . . . . .	. 40
*CAST THY BURDEN . . . . .	BERNARD HAMBLEN . . . . .	. 40
*CHRIST IN FLANDERS . . . . .	WARD-STEPHENS . . . . .	. 50
*CHRISTMAS CHIMES . . . . .	BERNARD HAMBLEN . . . . .	. 40
*EASTER HYMN . . . . .	FRANK BRIDGE . . . . .	. 40
*FROM DAY TO DAY . . . . .	BERNARD HAMBLEN . . . . .	. 40
GALILEE . . . . .	CHARLES WAKEFIELD CADMAN . . . . .	. 40
GIVE . . . . .	HERMANN LOHR . . . . .	. 50
*GOD, AND GOD ALONE, IS LOVE . . . . .	WARD-STEPHENS . . . . .	. 40
GOD'S GARDEN . . . . .	FRANK LAMBERT . . . . .	. 50
GOD'S LOVE . . . . .	WARD-STEPHENS . . . . .	. 40
*GRANT US THY PEACE . . . . .	BERNARD HAMBLEN . . . . .	. 40
GREAT LORD OF LIFE . . . . .	FLORENCE AYLWARD . . . . .	. 50
*HAIL, KING ETERNAL . . . . .	BERNARD HAMBLEN . . . . .	. 40
*HIS HAVEN . . . . .	BERNARD HAMBLEN . . . . .	. 40
IN MY FATHER'S HOUSE . . . . .	WARD-STEPHENS . . . . .	. 40
*JESUS OF NAZARETH KING! . . . . .	BERNARD HAMBLEN . . . . .	. 40
LIFT THY HEART . . . . .	FRANCES ALLITSEN . . . . .	. 50
*NO CANDLE WAS THERE AND NO FIRE . . . . .	LIZA LEHMANN . . . . .	. 40
*O, BABE DIVINE . . . . .	BERNARD HAMBLEN . . . . .	. 40
*O, LIGHT OF ALL THE WORLD . . . . .	BERNARD HAMBLEN . . . . .	. 40
*O LOVING FATHER . . . . .	TERESA DEL RIEGO . . . . .	. 50
*ON EAGLES' WINGS . . . . .	BERNARD HAMBLEN . . . . .	. 40
*RING OUT THE SWEET MESSAGE . . . . .	A. EMMETT ADAMS . . . . .	. 40
SHEPHERDS IN THE HUSH OF NIGHT . . . . .	GEOFFREY O'HARA . . . . .	. 40
*SHEPHERD TAKE ME BY THE HAND . . . . .	WARD-STEPHENS . . . . .	. 40
*SPIRIT DIVINE . . . . .	BERNARD HAMBLEN . . . . .	. 40
*TEACH ME, O LORD . . . . .	BERNARD HAMBLEN . . . . .	. 40
*THERE IS NO DEATH . . . . .	GEOFFREY O'HARA . . . . .	. 50
*THOU HIDDEN LOVE OF GOD . . . . .	WILLIAM T. TIMMINGS . . . . .	. 40
THROUGH PEACE TO LIGHT . . . . .	JAMES HAYDEN MORRIS . . . . .	. 40
*THE EMPTY TOMB . . . . .	BERNARD HAMBLEN . . . . .	. 40
*THE HEAVENLY GUIDE . . . . .	BERNARD HAMBLEN . . . . .	. 40
THE HIGHWAY OF LIFE . . . . .	HAROLD COSTIN . . . . .	. 40
THE PERFECT PRAYER . . . . .	TERESA DEL RIEGO . . . . .	. 50
*THE SACRED FLAME . . . . .	BERNARD HAMBLEN . . . . .	. 40
*THE STILL, SMALL VOICE . . . . .	BERNARD HAMBLEN . . . . .	. 40
*O WONDROUS NIGHT . . . . .	BERNARD HAMBLEN . . . . .	. 40

\* ALSO PUBLISHED AS AN ANTHEM FOR MIXED VOICES

**CHAPPELL-HARMS, INC.** 62 W. 45<sup>TH</sup> ST.  
NEW YORK

# THE WARD-STEPHENS

## Musical Settings of

I	II	III
Sacred Words	Selected Psalms	Words of Prayer and Love
High or Low Voice	FOR CHURCH FOR SCIENTISTS FOR TEMPLE	High or Low Voice

---

**SACRED WORDS** contains six songs, and may be termed songs of Faith. They comprise Praise God for Life Made New; Shepherd Take Me by the Hand; Love Never Faileth; In My Father's House are Many Mansions; Love Not the World, and Awake Thou That Sleepest. Every one of these songs is truly expressive, yet composed on simple lines, not difficult to sing or to play. There is fine variety of sentiment, each song having in it music expressive of the words. Most of this group are slow, or quiet songs, Awake Thou That Sleepest standing in a category by itself, being splendid, powerful, with trumpet-effects, calling on the listener to "Awake ! . . . and Christ shall give thee light!"

---

**SELECTED PSALMS**, contains words taken from psalms 24, 121, 46, 91, 23 and 139, as follows; The Earth is the Lord's; I Will Lift Up Mine Eyes Unto the Hills; God is Our Refuge; He That Dwelleth in the Secret Place; The Lord is My Shepherd, and Search Me, O God and Know My Heart. Songs of vigor, majestic, broad in tempo, with flowing melody and animation, are these. Seldom has a composer so thoroughly wedded text and music as in these, which too, are not difficult. One wonders at such big effects with such simple means! But this is a mark of artistic construction.

---

**WORDS OF PRAYER AND LOVE** may be termed songs of devotion, for they echo this spirit. They are; Lead Me to Light; God, and God Alone is Love; The Prayer; Thou Leadest Me; While the Days Are Going By; God's Love, and contain music of altogether beautiful quality, prayerful, gentle, appealing, set to poems of unusual quality. Such an one is God Is Love. Quoting a part:

Eagerly the world is waiting  
For a little word of love;  
It is weary of its hating and is  
Crying out for love.

Set like a hymn-tune, simply, it exerts power in every note and line. The Prayer begins "Lover of souls, indeed, but lover of bodies too." There is much originality, without seeking, in this music. Organists and choir directors seeking real church solos will find these unique and effective.

---