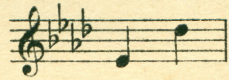


A Perfect Day.

'Cello Obbligato.



Words and Music by
CARRIE JACOBS-BOND.

Moderato espressivo.

'Cello

p sostenuto

When you come to the end of a per - fect day, And you sit a - lone with your

thought, While the chimes ring out with a car - ol gay For the

joy that the day has brought, Do you think what the end of a

mf

mf

mf

Detailed description: This system contains the first three staves of music. The top staff is the bass clef vocal line, the middle staff is the treble clef vocal line, and the bottom two staves are the piano accompaniment. The key signature has three flats (B-flat, E-flat, A-flat). The first vocal line ends with a long note, and the second vocal line begins with the lyrics 'joy that the day has brought, Do you think what the end of a'. The piano accompaniment features a rhythmic pattern of eighth notes in the right hand and a more melodic line in the left hand. Dynamic markings include *mf* (mezzo-forte) above the vocal lines and below the piano accompaniment.

per - fect day Can mean to a tired heart, When the

Detailed description: This system contains the next three staves of music. The vocal lines continue with the lyrics 'per - fect day Can mean to a tired heart, When the'. The piano accompaniment continues with the same rhythmic and melodic patterns. The dynamic marking *mf* is present.

sun goes down with a flam-ing ray, And the dear friends have to part?

rall. *p*

rall. *p*

rall. *p*

Detailed description: This system contains the final three staves of music on the page. The vocal lines conclude with the lyrics 'sun goes down with a flam-ing ray, And the dear friends have to part?'. The piano accompaniment features a final cadence. Dynamic markings include *rall.* (ritardando) and *p* (piano) above and below the vocal lines and piano accompaniment.

p *cresc.* *mf*

p *cresc.* *mf*

p *p*

Well, this is the end of a per - fect day, Near the end of a jour - ney,

too; But it leaves a thought that is big and strong, With a

wish that is kind and true. For mem - 'ry has paint - ed this

mf

per - fect day With col - ors that nev - er fade, And we

find at the end of a per - fect day The soul of a friend we've made.

rall. *pp*

A Perfect Day.

'Cello Obligato.

CARRIE JACOBS-BOND.

Moderato espressivo.

1

p sostenuto

mf

rall.

p

p cresc. mf p

mf

rall.

pp