

Etharc

# "IN A PERSIAN GARDEN"

Ben

A CYCLE FOR FOUR SOLO VOICES  
WITH PIANOFORTE ACCOMPANIMENT

By

## L I Z A L E H M A N N

To words from the  
RUBAIYÁT OF OMAR KHAYYÁM



COMPLETE CYCLE: Paper, \$3.00

### SONGS:

published separately

|   | Prices in U. S. A. |
|---|--------------------|
| → MYSELF WHEN YOUNG<br>Medium, F; Low E $\flat$ (original)  | .60 ←              |
| AH, MOON OF MY DELIGHT<br>High G (original); Medium, F<br>Orchestration, in G, may be hired from publishers | .90                |



BOSTON, MASS.

THE BOSTON MUSIC CO.



New York : G. Schirmer, Inc.

London : Metzler & Co., Ltd.

FURMAN



Music Co.

29 N. CALIFORNIA STREET

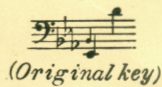
STOCKTON, CALIF.

T

# MYSELF WHEN YOUNG

(From "In a Persian Garden")

Text from the Rubáiyát of  
Omar Khayyám  
English version by  
Edward Fitzgerald



LIZA LEHMANN

Con moto, ma non troppo (♩ = 96)

PIANO

*pp* *assai legato*

due Lea \* Lea \*

*mezza voce*

My - self when young did ea - ger -

Lea \* Lea Lea

*ly* fre - quent

Doc - tor and Saint, and heard great

Lea \* Lea Lea

ar - gu - ment:

But ev - er - more

Lea \* Lea Lea

*p* *ah ah ah ah ah ah*  
 — Came out by that same door where — *rin* — I

*p*

*La* \* *La*

*sempre mezza voce*  
 ee went. With them the seed of Wis - dom

*p*

*La* *La* *La*

did I sow, And with my own hand la - bor'd

\* *La* *La*

*cresc.* *poco rit.* *f*  
 it to grow; And this was all the Har - vest that I reap'd —

*poco rit. colla voce* *f*

*cresc.* *RIT.*

\* *La* *La* \* *La*

*a tempo*  
*p subito*

"I came like wa - ter, and like wind I go!"

*a tempo*

*p subito*

La. \* La. La.

*f più energico*

Why, all the Saints and Sa - ges who dis - cuss'd Of the Two

*f*

La. \* La. La. \* La.

Worlds so learn - ed - ly are thrust Like fool - ish Prophets

La. \* La. La. \* La.

*più lento*

*ff*

forth; their words to scorn Are scat - ter'd,

*più lento*

*molto cresc.*

*ff*

La. La. \* La. La.

*a tempo* *uh*

and their mouths are stopp'd with dust.

*a tempo*

*Ped.* \* *Ped.* \* *Ped.* \* *Ped.*

*dim.*

*dim.* *p*

\* *Ped.*

Come prima  
*mezza voce*

My - self when young did ea - ger -

*p*

*Ped.* \* *Ped.* *due Ped.*

ly fre - quent Doc - tor and Saint, and heard great

\* *Ped.* \* *Ped.*

ar - - gu - - ment: - But ev - er - more

\* *La* *La* \*

*poco rall.* *a tempo* *p* Came out by that same door where -

*poco rall.* *a tempo* *p*

*dillo* \* *La*

in I went.

*pp* *pp* *pp*

\* *La* *La* *La*

*pp* *La* \*

# A Gem, written in Ethelbert Nevin's most characteristic style



"My Love's Waitin'" originally published in a collection of songs issued by Dartmouth College, was composed in 1898, the same year that Nevin wrote the "Rosary." It has remained completely unknown to the world at large for over a quarter of a century and is now offered to the public.

**My Love's Waitin'!**

From "A June Night in Washington?"  
by Richard Hovey,  
Class '85, Dartmouth College

Music by  
Ethelbert Nevin

Non troppo allegro *mf*

Voice *like a banjo* My love's wait-in', Wait-in' by the riv-er,

Piano *mf* *quasi pizz.*

Wait-in' till I come a-long! Wait there, child, I'm com-in', com-in',

*con amore*

Copyright, 1898, by Ethelbert Nevin  
Copyright assigned, 1924, to The Boston Music Co.  
Printed in U.S.A.

The Boston Music Company, Boston, Mass.