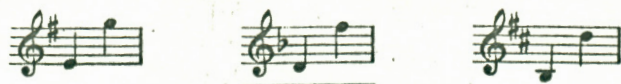


The Morning Wind



KENDALL BANNING *)

GENA BRANSCOMBE

Allegretto con brio

The

mf

Detailed description: This system contains the first musical system. It features a vocal line on a single staff and a piano accompaniment on two staves (treble and bass clef). The tempo is marked 'Allegretto con brio'. The key signature has one sharp (F#) and the time signature is 6/8. The piano accompaniment consists of a continuous eighth-note triplet pattern in the right hand and a simple bass line in the left hand. The vocal line begins with the word 'The'.

morn - - ing wind is woo - - ing me; Her

Detailed description: This system contains the second musical system. The vocal line continues with the lyrics 'morn - - ing wind is woo - - ing me; Her'. The piano accompaniment continues with the same triplet pattern.

lips have swept my brow.

Detailed description: This system contains the third musical system. The vocal line concludes with the lyrics 'lips have swept my brow.'. The piano accompaniment continues with the triplet pattern.

*) By permission of POETRY, a Magazine of Verse

meno mosso

Was ev - er dawn so sweet be - fore? The

meno mosso

a tempo

land so fair as now?

a tempo

f

The wan - - der - lust is

f

meno mosso

lur - ing To where - ev - - er roads may

meno mosso

accel.

lead, While yet the dew is on the hedge;— So

accel.

rit e cresc. *a tempo*

how can I but heed?

rit e cresc. *f a tempo*

mf *rit.* *p*

Andante tranquillo *very legato* *meno mosso*

The for - est whis - pers of its shade;—

pp *meno mosso*

a tempo *dim. e rit.*

Of haunts where we have

a tempo *dim. e rit.*

a tempo *f Allegretto*

been, And where may friends be bet-ter made Than

a tempo *f colla voce*

rit. *Tempo I*

un - der God's green inn?

rit. *p leggiero*

p

Your mouth is warm and

laugh - ing,

p

cresc. e rit.

a tempo

f con brio

p

And your voice is call - ing

pp

mf

cresc.

f

low, While yet the dew is on the hedge; So

mf

cresc.

f

rit.

a tempo

how can I but go?

rit.

mf a tempo cresc.

ff

sfz