

MAH LINDY LOU

A Banjo Song

With Piano Accompaniment

Words and Music

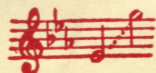
By

LILY STRICKLAND

Price, 50 cents, net

(In U. S. A.)

→ *High in E_b*



Low in C



RUTH SAMPSON

Sheet Music Service

Opposite the Post Office

911 RIVERSIDE AVE. PHONE MAIN 3835

SPOKANE, WASHINGTON

G. SCHIRMER, Inc. • NEW YORK

Mah Lindy Lou

Lily Strickland

Allegretto grazioso

Voice

mp

1. Hon - ey, — did you
 2. Lin - dy, — did you
 3. Lin - dy, — did you

Piano

*mp lazily**mp*

heah dat mock - in' - bird sing las' night? _____
 smell dat hon - ey - suck - le vine las' night? _____
 feel dat souf ___ win' ___ blow las' night? _____

accel.

O Lawd, he wuz sing - in' so sweet in de moon - light!
 O Lawd, hit wuz smell - in' so sweet in de moon - light!
 Hon - ey, — hit wuz kiss - in' you sweet in de moon - light!

mp cresc.

Orchestral parts may be obtained from the publishers.

Also published as Part-Song; men's voices, 8^v No. 6990, 15 cents, net; mixed voices, 8^v No. 6991, 20 cents, net; women's voices, 8^v No. 6992, 12 cents, net.

Copyright, 1920, by G. Schirmer, Inc.

Printed in the U. S. A.

29676 c



poco riten.

In de ole mag - no - lia tree,
 Cling - in' roun' ma cab - in do',
 Blow - in' from de ole Ba - you,

accel. *poco riten.*

f *a tempo* *ff*

Bust - in' his heart wid mel - o - dy! I know, he wuz
 Reck - on it's 'case he love's hit so! Hon - ey! dat's de
 Seemed to say hit love you so! Hon - ey, dat's de

f cresc. *a tempo marcato*

dolce *ff*

sing - in' ob you,	Mah Lin - dy Lou,	Lin - dy Lou!	0
way I love you,	Mah Lin - dy Lou,	Lin - dy Lou!	0
way I love you,	Mah Lin - dy Lou,	Lin - dy Lou!	0

cresc.

rall. , *a tempo* , *f*

Lawd, I'd lay right down an' die, Ef I could sing lak dat bird sings to
 Lawd, I'd lay right down an' die, Ef I could be as sweet as dat to
 Lawd, I'd lay right down an' die, Ef I could be dat win' a - kiss - in'

ff *rall.* *a tempo* *f*

rall. *dolce* *rit. dim.* **1. 2.** *a tempo*

you, — Mah lid - dle Lin - dy Lou! —
 you, — Mah lid - dle Lin - dy Lou! —
 you, — Mah lid - dle Lin - dy

rall. *dolce* *rit. dim.* *mp a tempo*

3. *a tempo*

Lou! —

a tempo *l.h.* *l.h.*