

# Kansas

SONG.

WORDS BY  
MARY MC DOLE

35

*With loving appreciation  
from the calendar*  
MUSIC BY  
MRS. B. J. DALTON

PUBLISHED BY  
KANSAS MUSIC PUBLISHING CO.  
1600½ BELMONT AVE.  
PARSONS, KANSAS.

# KANSAS

Words by  
MARY MAC DOLE

Music by  
Mrs. B. J. DALTON

## INTRODUCTION

With Spirit

With Sentiment

*mf*

1. When out of the mist and the star dust — God fashioned this plan-et of  
3. Her days are a breath of Heav-en, — Her nights a bap-tism of  
1. When night spreads her man-tle o'er Kan-sas, — Cloud-film-ed or star-sprinkled

clay,  
dew,  
blue;

When He left an im-print up-on it — Ere it  
When Sum-mer and Spring lin-ger o'er her — And com-  
By mists of chill days en-fold-ed — Or warmed

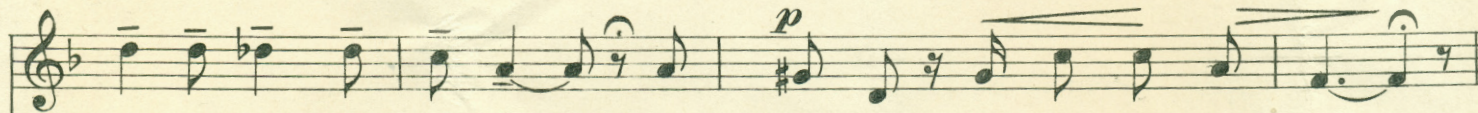
*marcato*



ped thro' the Milk - y Way. \_\_\_\_\_ That spot is our Gar - den of  
mune with her chil - dren, too; \_\_\_\_\_ Her Au - tumn a soft ben - e -  
by sun's va - ri - ant hue; \_\_\_\_\_ In the dawn of the rose-tinted



E - den; \_\_\_\_\_ Hills, val - leys and prair - ies so free, \_\_\_\_\_ The  
dic - tion, \_\_\_\_\_ Gol - den leaves fall like blest words in prayer; \_\_\_\_\_ Her  
morn - ing; \_\_\_\_\_ Thro' the dusk of the gray even - tide, \_\_\_\_\_ May



land God blessed and pros - pered, 'Tis Kan - sas to you and to me.  
winter - life's last silent sermon, Shrouds in white, Mother Earth, chill and bare.  
God guard this State, He imprinted; With her peo - ple for - ever a - bide.



Red. \* Red. \* Red. \* Red. \* Red. \* Red. \* Red. \* Red.

REFRAIN

*With Spirit*

*f*

Kan - sas the land of prom - ise

Kan - sas the state of the free, Kan - sas the home of our

*p* *rit.*

her - oes brave, Kan - sas be - loved of you and of me.

*marcato*

II Kansas— the rainbow of redmen  
 Who brothered with sun and with storm:  
 Kansas— glad haven of pilgrims,  
 A harbor from bondage and harm;  
 For grandsires, northern and southern,  
 A place to weld bonds broke in twain;  
 For souls of their sons, land triumphant,  
 To march from in Victory's train.