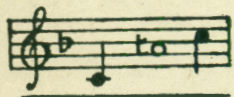
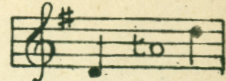


Nº 1 IN F



To Ed Steffe  
from J.H.W.

Nº 2 IN G



DEDICATED TO & SUNG BY  
MR. PLUNKET GREENE.

# KING CHARLES

Cavalier Song

THE WORDS BY

Robert Browning

THE MUSIC

\* by \*

MAUDE VALERIE WHITE.

PRICE ~~60~~ CENTS (NET)

BOOSEY & ©.

NEW YORK - TORONTO - LONDON (ENG.)  
9 EAST 17<sup>TH</sup> ST. 384 YONGE STREET 295 REGENT ST., W.

THIS SONG MAY BE SUNG IN PUBLIC WITHOUT FEE OR LICENSE  
THE PUBLIC PERFORMANCE OF ANY PARODIED VERSION, HOWEVER, IS STRICTLY PROHIBITED

COPYRIGHT 1898 BY BOOSEY & C<sup>O</sup>



## KING CHARLES.

---

Who gave me the goods that went since?  
Who raised me the house that sank once?  
Who helped me to gold I spent since?  
Who found me in wine you drank once?

King Charles! King Charles! and who'll do him right now?  
King Charles! King Charles! and who's ripe for fight now?  
Give a rouse, give a rouse, in hell's despite now!  
King Charles! King Charles! King Charles!

To whom did my boy George quaff else,  
By the old fool's side that begot him?  
For whom did he cheer and laugh else,  
While Noll's damned troopers shot him?

King Charles! King Charles! and who'll do him right now?  
King Charles! King Charles! and who's ripe for fight now?  
Give a rouse, give a rouse, in hell's despite now,  
King Charles! King Charles! King Charles!

ROBERT BROWNING.

# KING CHARLES.

Words by  
ROBERT BROWNING.

Music by  
MAUDE VALÉRIE WHITE.

**Tempo di Marcia.**

Piano.

The piano introduction consists of two staves in 2/4 time. The right hand features a rhythmic pattern of eighth and sixteenth notes, while the left hand plays a steady bass line. Dynamics range from *p* to *ff*.

*f deciso.*

Who gave me the goods that went since?

The first line of lyrics is set to music. The vocal line is in the upper staff, and the piano accompaniment is in the lower two staves. The music is in 2/4 time and features a strong, decisive character.

Who raised me the house that sank once? Who helped me to gold I

The second line of lyrics continues the musical setting. The vocal line and piano accompaniment maintain the march-like tempo and dynamic intensity.

spent since? Who found me in wine you drank once?

The third line of lyrics concludes the page. The music features a final cadence with a key signature change to one sharp (F#).

*a little quicker*

Who gave me the goods that

*p a little quicker.* *cre - - - - - scen*

went since? Who helped me to gold? Who

*do.* *ff*

*rall.* *con brio.*

found me in wine you drank once? King Charles! King Charles! And

*rall.* *con brio.*

who'll do him right now? King Charles! King Charles! and who's ripe for fight now? Give a

rouse, give a rouse, in hell's des-pite now! King Charles! King Charles!

King Charles!

*rit.*

*molto rit. f con forza.*

*con brio. with enthusiasm. ff*

*accel*

*er an*

King Charles! To whom did my boy George

*p sadly.*

*do.*

*ff*

*p*

quaff else, By the old fool's side that be - got him? For

*sadly.*

*poco rit.*

*colla voce.*

*pesante. colla voce.*

whom did he cheer and laugh else, While Noll's damned troop - ers

shot him? For whom did he cheer

*a little quicker.*

*p a little quicker.*

and quaff else, and

*ff*

laugh else, While Noll's damned troop-ers shot him? King

*rit.*

*rit.*

*f con brio.*

Charles! King Charles! and wholl do him right now? King Charles! King Charles! and

*f con brio.*

who's ripe for fight now? Give a rouse, give a rouse, in hell's despite now! King

*rit.*

Charles! King Charles!..... King Charles!.....

*molto rit. con forza.*

*ff con brio. with enthusiasm. ff*

*accel*

*er*

King Charles!.....

*an - do.*

*ff*